

# The FPLS State Services Portal at a Glance

The Federal Parent Locator Service (FPLS) State Services Portal (SSP) is the internet gateway to the FPLS. It provides access to existing FPLS information and offers a quick and inexpensive way to take advantage of new FPLS applications and programs. Even though you can continue to access most of the FPLS through your existing batch processes, you need to implement the FPLS SSP in your state to take advantage of exciting new applications. Services available through the FPLS SSP are:

**Debt Inquiry** provides employers and insurance companies the ability to tell you when they plan to pay one-time lump sum payments, and in the case of some insurers, recurring payments to people with past-due child support debts. This allows you to take the necessary steps to garnish those payments quicker.

**DoD Entitlement** is available only through the SSP. The application provides a breakdown of wages, bonuses and other financial allowances for active and reserve members of the military. This information is crucial in establishing and maintaining fair and equitable child support orders.

**eEmployer Search** includes all the employer information in the National Directory of New Hires (NDNH)! It also provides specific name and address information of employers that participate in electronic income withholding (e-IWO). Using this application, you can easily find the information you need to set up your e-IWO process or maintain your employer database.

**Electronic Document Exchange** is another great tool in interstate case processing that lets you exchange documents (birth certificates, court orders, etc.) with other states, making it possible to speed up case processing. You no longer have to wait for the mail to arrive. Documents are managed in a safe, secure environment and arrive ready for your immediate use.

**eTermination** enables employers to electronically report employee terminations. In addition, the application allows employers to respond electronically to IWOs, indicating that their organization no longer or has never employed the noncustodial parent.

**Federal Case Registry (FCR) Misidentified Participant** allows you to add or remove an SSN from a table of known SSNs that are not associated with a specific participant in your state. It also allows you to view the current listing of previously reported misidentified SSNs and associated participants.

**FCR Query** enables you to search the FCR by either your state case ID or a participant SSN within your state caseload. It also allows you to search for cases and participants in other states that you have in common. This application assists with all aspects of case management including interstate case synchronization, paternity establishment, and establishment or modification of child support orders.

**Federal Collections and Enforcement** provides a new way to view and submit updates on the past-due support cases your state has certified for federal tax refund and administrative offset, passport denial, multistate financial institution data match, and federal insurance match. The SSP application is user-friendly and provides functionality not previously available.

**Locate** allows you to request information from FPLS external locate sources (Department of Veterans Affairs, Social Security Administration, Department of Defense, Internal Revenue Service, Federal Bureau of Investigation, and National Security Agency). As a reminder, the FPLS has to wait for responses from these sources, so this may affect your wait time as well. As an alternative, you can immediately access and view NDNH employment, wage, and unemployment information through this application. The Locate application helps you overcome hurdles in obtaining location, asset and employment information on your cases!

**Query Interstate Cases for Kids (QUICK)** gives you direct access to other states' case activities and financial information in interstate cases—some of the most difficult cases to manage. Since approximately 30 percent of all cases have an interstate component, this application will help you make the right case management decisions without waiting for a response from the other state.

*You can begin to access applications on the FPLS SSP by contacting the  
OCSE End User Support Team at 800-258-2736 or [ocse.gr-portal@lmco.com](mailto:ocse.gr-portal@lmco.com).*

# Paycheck Plus

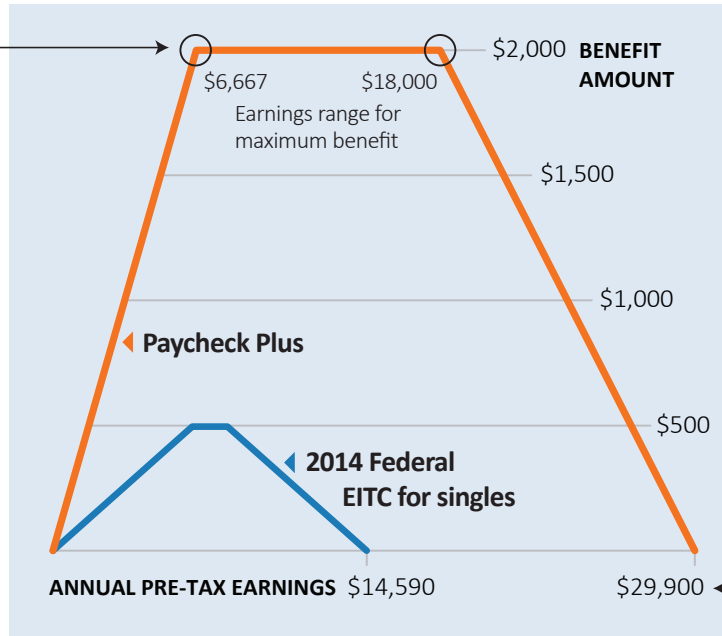
## Making Work Pay for Low-Income Single Adults

A groundbreaking demonstration with the Center for Economic Opportunity in New York City tests the impact of a new work-based earnings supplement, similar to the Earned Income Tax Credit (EITC), on economic and social outcomes for single adults.

### What is Paycheck Plus?

Paycheck Plus enhances the current federal EITC for single workers with no dependent children.

It offers a more generous maximum benefit — \$2,000 rather than \$496 — to workers making up to \$18,000. Since participants receive more for earning more, the supplement is expected to promote work.



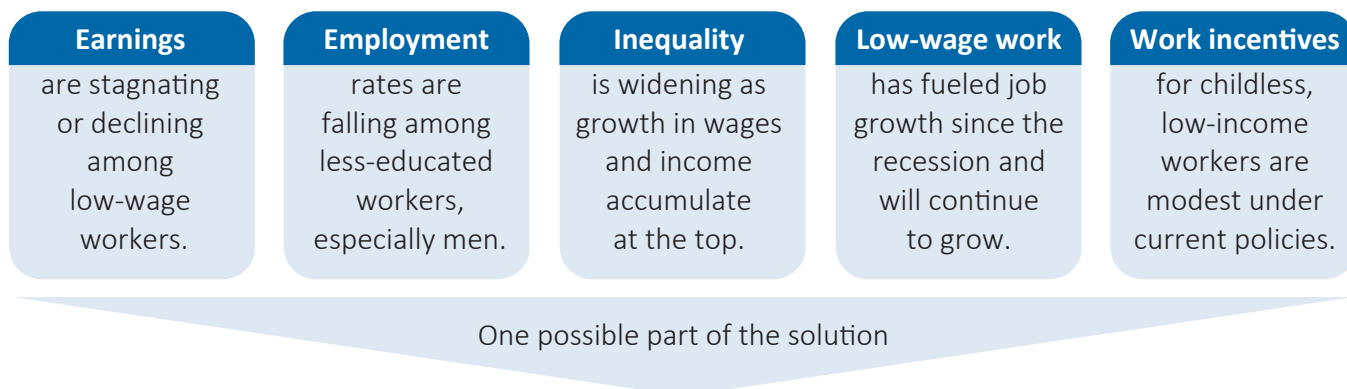
It extends benefit eligibility to single workers earning close to \$30,000, nearly doubling the income cutoff for the federal EITC.

### How does it benefit single workers without children?

What workers who filed their taxes as single receive under current policy:	Two	One	None	What Paycheck Plus does:
Number of dependent children	Two	One	None	A single worker without a dependent child receives a modest federal EITC. Paycheck Plus will “top up” the federal credit amount.
Pre-tax earnings	\$13,000	\$13,000	\$13,000	
2014 federal EITC	\$5,200	\$3,305	\$122	
Total available	\$18,200	\$16,305	\$13,122	
				<b>+ \$ 1,878 ← Paycheck Plus</b>
				<b>\$15,000 ← Total available</b>

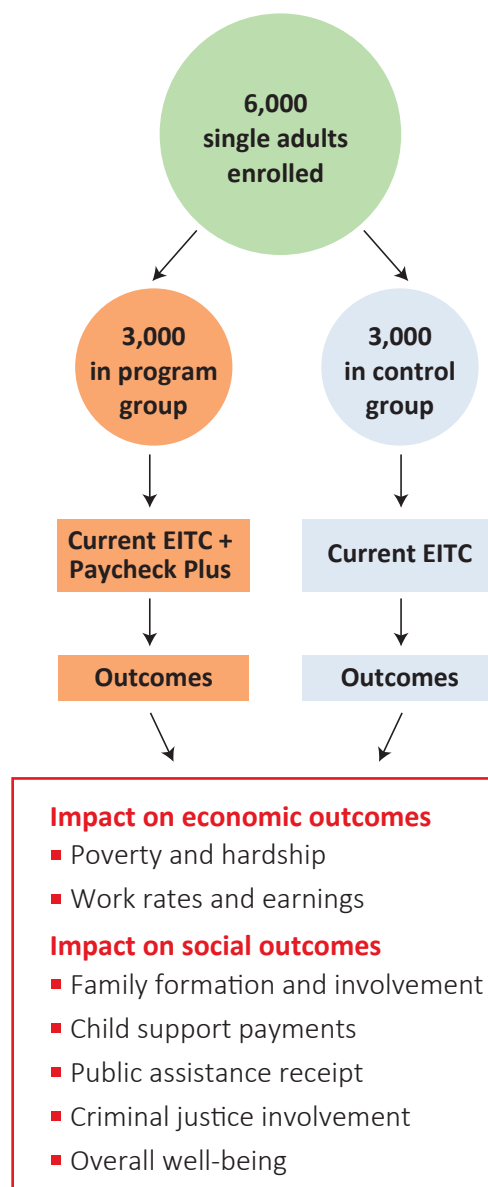
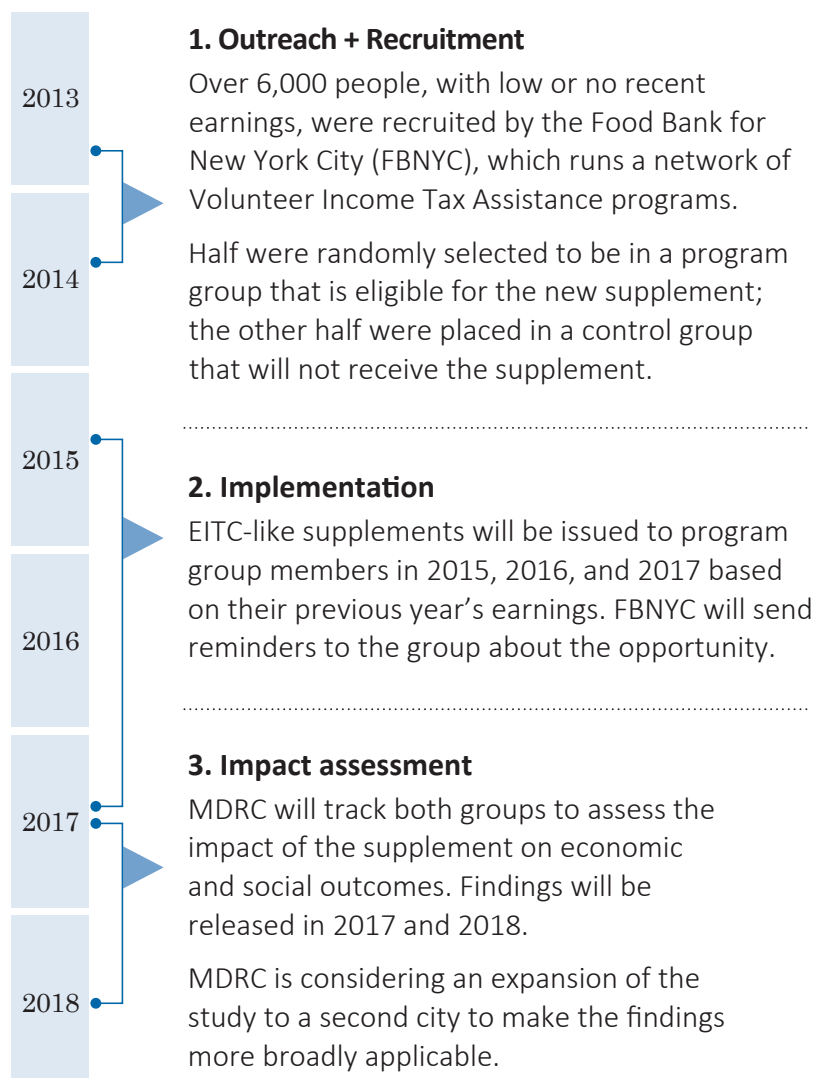
Current federal EITC primarily benefits low-income workers with dependent children.

## Why is there a need for Paycheck Plus?



**Make work pay at the low end by creating an EITC-like earnings supplement for single adults.**

## How will Paycheck Plus work?



# CHILD SUPPORT 2014: MORE MONEY FOR FAMILIES

## COLLECTIONS

**\$32 Billion**

in child support  
collected by state and  
tribal child support  
programs in FY2014



**95%**

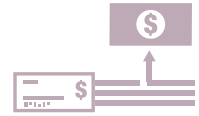
went to families



5% reimbursed  
public assistance dollars

**75%**

collected through  
income withholding from  
the employee's paycheck



## CASELOAD

In 2014 the child support program served

**16 Million children**



Nearly 1 in 4  
children in  
the U.S.\*



Families eligible for child support\*

**29%** of custodial  
families have income  
below the federal  
poverty level

Child support represents  
**45%** of family income  
for poor custodial  
families that receive it

Custodial parents eligible for child support\*

**82%**

are women

**79%**

are 30 or older

**57%**

have just one  
eligible child

**68%**

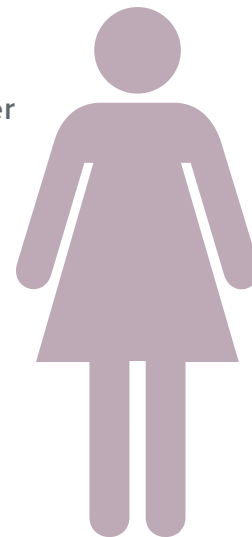
White

**25%**

Black

**21%**

Hispanic  
(any race)



## COST-EFFECTIVENESS

One of the most  
cost-effective  
government programs



For every **\$1.00** spent...

...the child support program  
collects **\$5.25**



## Then<sup>1</sup>

### CHILDREN SERVED

**<3**  
MILLION



Most from previously married, traditional families

## Now<sup>2</sup>

**16**  
MILLION

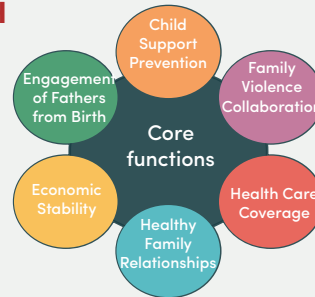


More from unmarried, complex families

### SERVICE APPROACH



Core functions



Family-centered strategies

### NUMBER OF PROGRAMS



**54**  
states and  
territories



**54**

States and  
territories



**60+**

Tribes



**25+**

Countries and  
provinces

### COST-EFFECTIVENESS



**\$3.25**

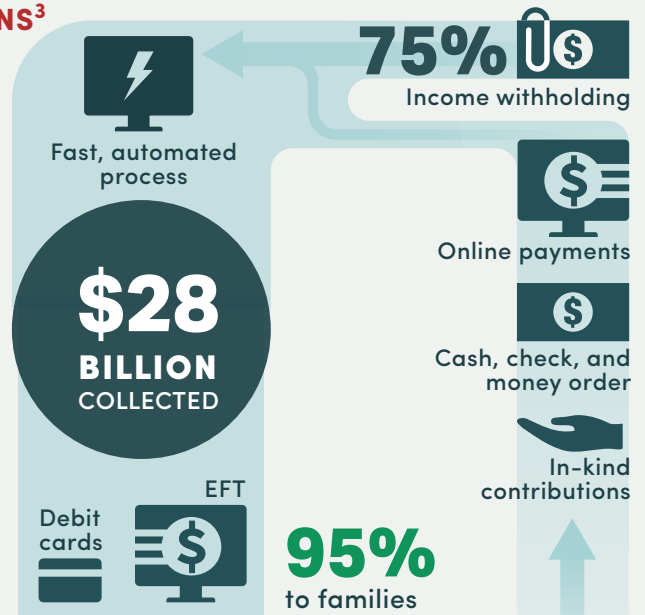
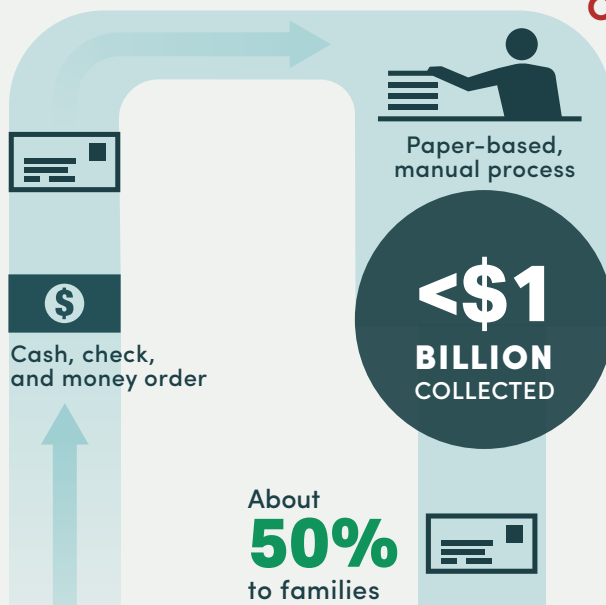
COLLECTED  
for every \$1 spent



**\$5.25**

COLLECTED  
for every \$1 spent

### COLLECTIONS<sup>3</sup>



<sup>1</sup> Then - Federal Office of Child Support Enforcement (OCSE) FY1977 Annual Report to Congress.

<sup>2</sup> Now - OCSE FY2014 Preliminary Report.

<sup>3</sup> Collections - IV-D only collections.