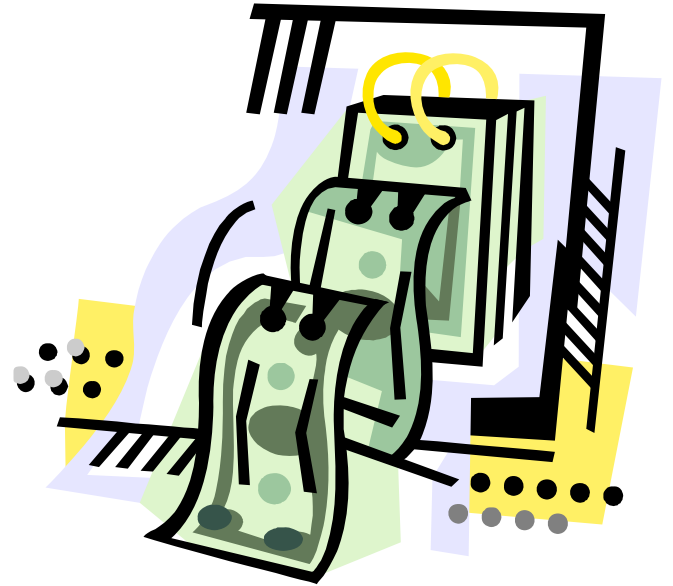


# Using Reports to Improve Performance



# Objectives

- Review Federal Performance
  - Incentives (Federal and State)
- Review Reports
  - Types of Reports
  - Access
  - Which Reports help each incentive
- Group discussion

# Federal Incentives

- Based on Performance in 5 measures
  - Paternity Establishment
  - Order Establishment
  - Collections on Current
  - Collections on Arrears
  - Cost Effectiveness

<b><i>IV-D Measurement Formulas</i></b>		<b><i>FFY06</i></b>	<b><i>FFY07</i></b>	<b><i>FFY08</i></b>
<b>Paternities Established</b>	$\frac{\text{Total Number of Children in Open Cases with Paternity Established}}{\text{Total \# of Children in Open Cases Not Born in Marriage}}$	<b>96%</b>	<b>96%</b>	<b>97%</b>
<b>Orders Established</b>	$\frac{\text{Open Cases at the End of the Fiscal Year with Support Orders Established}}{\text{Open Cases at the End of the Fiscal Year}}$	<b>82%</b>	<b>82%</b>	<b>84%</b>
<b>Collections on Current</b>	$\frac{\text{Total Amt of Support Distributed as Current Support During Fiscal Year}}{\text{Total Amount of Current Support Due for the Fiscal Year}}$	<b>68%</b>	<b>69%</b>	<b>70%</b>
<b>Collections on Arrears</b>	$\frac{\text{Total Cases with Support Distributed as Arrears During Fiscal Year}}{\text{Total Cases with Arrearages Due for All Fiscal Years}}$	<b>66%</b>	<b>66%</b>	<b>68%</b>
<b>Cost Effectiveness</b>	$\frac{\text{Total Collections Forwarded to Other States + Total Collections Distributed + Total Fees Retained by Other States}}{\text{Total Dollars Expended}}$	<b>\$4.04</b>	<b>\$4.01</b>	<b>\$3.91</b>

# Collections on Current Source Data

FFY 2007  
(69%)

FFY 2008  
(70%)

Amt Distrbt.

\$472.4M

\$477.5M

Amt Due

\$682.8M

\$680.8M

# Collections on Arrears Source Data

	FFY 2007 (66%)	FFY 2008 (68%)
Cases w/ arr. pd	<u>132,535</u>	<u>134,529</u>
Cases w/ arr.	197,815	196,956

# Cost Effectiveness Source Data

	FFY 2007	FFY 2008
	(\$4.01)	(\$3.91)
Collections Disb.	<u>\$616.6M</u>	<u>\$635.3M</u>
Total \$\$ Expnd.	\$153.6M	\$162.2M

# Minnesota's Share of Federal Incentives

- FFY 2006 - \$12.26M
- FFY 2007 - \$12.39M
- FFY 2008 - \$12M (Advance)
- FFY 2009 - \$12M (Advance)
  - Settle-up from prior year added to advance



# State Calculations

## 1 Calculate Max. Collections Base

$$\begin{array}{r}
 \text{Never Assistance Coll } \$ \\
 \text{Current Assistance Coll } \$ \times 2 \\
 \text{Former Assistance Coll } \$ \times 2 \\
 + \text{ Medicaid Never Assistance Coll } \$ \times 2 \\
 \hline
 = \text{ Our State's Max Collection Base}
 \end{array}$$

## 2 Calculate *Maximum Incentive* for Each Indicator

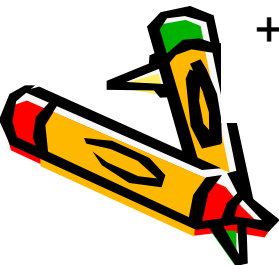
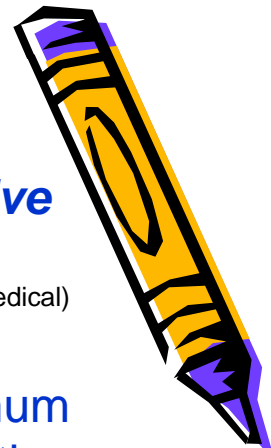
(Paternity, Obligations, Current, Arrears, Cost Eff., Medical)

Your Actual Perf	Your Maximum Incentive
100%	100%
80%	100%
60%	70%
40%	50%
0%	0%

## 3 Calculate Total Incentive Base

$$\begin{array}{r}
 \text{Max Collections Base} \times \text{Your Maximum Paternity } \% \\
 \text{Max Collections Base} \times \text{Your Maximum Obligation } \% \\
 \text{Max Collections Base} \times \text{Your Maximum Current Supp } \% \\
 \text{Max Collections Base} \times \text{Your Maximum Arrears } \% \quad \times .75 \\
 \text{Max Collections Base} \times \text{Your Maximum Cost Effect. } \% \quad \times .75 \\
 \hline
 \end{array}$$

= Our State's Total Incentive Base



# National Calculations

$$\begin{aligned} & (\text{Our State's Total Incentive Base} \\ & \div \text{Sum of All States' Incentive Bases}) \\ & \times \text{National Incentive Pool} \\ & \text{-----} \\ & = \text{Our Incentive Payment} \end{aligned}$$

FFY	Incentive Pool	Change
2000	\$422,000,000	
2001	\$429,000,000	2%
2002	\$450,000,000	5%
2003	\$461,000,000	2%
2004	\$454,000,000	-2%
2005	\$446,000,000	-2%
2006	\$458,000,000	3%
2007	\$471,000,000	3%
2008	\$483,000,000	2%



# State Incentives

- \$3.35 Million reduction next 2 years
  - SFY 10-11
- \$1.5 Million remaining
- Only Paternity and Modifications paying

# Types of Reports

- eReports (formerly Infopac)
- CPAT
- Data Warehouse
  - Standard
  - Ad Hoc

# eReports (Formerly Infopac)

- Approximately 320 eReports
- Complete list of eReports and User Guide on DHS-SIR
  - Reports and Resources (Documentation Column)
  - eReports Documentation

# eReports (Continued)

- QQ – Data From PRISM
- QW – Data From Data Warehouse
- Document Direct
  - [www.OET.state.mn.us](http://www.OET.state.mn.us)
  - Search “DDI” – Document Direct (Internet)

# CPAT

- County Performance Analysis Tool
  - <http://dwreports.dhs.state.mn.us/CSED/AdminSite.asp>
- CPAT vs. eReports
  - Drill down to worker level on eReports

# Data Warehouse Reports

- Standard
  - Currently 44 standard reports
- Ad Hoc
  - Specific to your county/issue
- Both accessed through DHS-SIR



# Paternity Reports

- eReports
  - QQ210202 - Children Requiring Paternity
  - QQ210205 - State summary by county
- Data Warehouse
  - C01 Open LETL – No activity in last 6 mo

# Establishment Reports

- eReports
  - QQ410501 – Case w/out an order- detail
  - QQ410502 – County Summary
  - QQ410503 - State Summary
- Data Warehouse
  - C01 - Open LETL – No activity in last 6 mo

# Current Support Reports

- eReports
  - QQ410601- 03 Detail and Summary
    - Cases w/out current support obligation
  - QW250401 – Delinquency Report – no pay
  - QW250402 – Delinquency Report – Partial pay

# Arrears Support Reports

- eReports
  - QW250401 – Delinquency Report – no pay
  - QW250402 – Delinquency Report – Partial pay
- Data Warehouse
  - E06 - Cases w/ arrears, suppressions
  - F01 – Cases w/ arrears only
  - F14 – Arrears only w/out monthly non accrual
  - F16, 17- Arrears incentive report (sum, detail)

# Cost Effectiveness

## Current Collections

## Expenditures

- Expenditures data found on net county admin cost and reinvestment summary
  - DHS-SIR/PRISM/Business Management/County Admin Expenditures Report

# The Future of Reports

- Predictive Analytics
- Evidence Based Decision Making

# Thank You!!

- John Dufner
  - Federal Reports and Compliance
  - (651) 431-4584
  - [John.Dufner@state.mn.us](mailto:John.Dufner@state.mn.us)